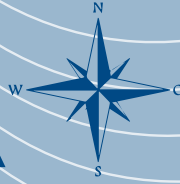
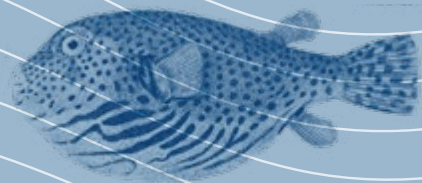
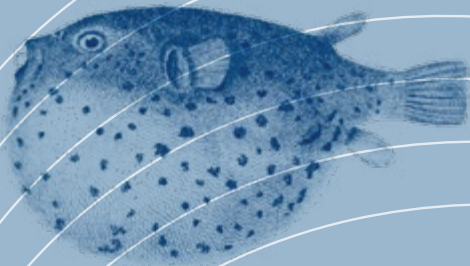




SEA STAR



NAUTIC COLLECTION



Sauleda
since 1897



SEA STAR

NAUTIC COLLECTION

Sea Star is the fabric designed for boaters, whose paths pass through the sea and make it their home. Manufactured in two different qualities, Normal and Special, this is a collection of high-end acrylic fabrics with the highest performance in the nautical sector.

Sea Star es el tejido diseñado para navegantes, cuyos caminos transcurren en el mar y hacen de él su hogar.

Fabricado en dos calidades, Normal y Special, es la colección de tejidos acrílicos de alta gama con el más alto rendimiento en el sector náutico.



Sauleda
since 1897

Sea Star has excellent properties: long life, great resistance to UV radiation, permeability to air, and water tightness, anti-mold properties, light weight, ease of maintenance and solution dyed acrylic fabric make it the best choice for your nautical adventures.

Sea Star presenta unas excelentes cualidades: larga vida, elevada resistencia frente a los rayos UV, permeabilidad al aire, impermeabilidad al agua, antimoho, ligereza y fácil man-tenimiento. Todo ello, unido a la fibra acrílica Masacril® tintada en masa, lo convierte en el tejido náutico por excelencia.



Finishes/ Acabados

Sea Star Normal

These fabrics have extra water repellence, without detracting from their breathable qualities.

Las lonas Sauleda Sea Star aumentan su repelencia al agua sin perder transpirabilidad.

Sea Star Special S

The special resin-coated finish provides the fabric a series of properties and a resistance of higher than 1.000 mm.

El acabado especial proporciona a las lonas Sea Star Special unas cualidades y una resistencia superior a 1.000 mm.

Sea Star Normal

<input type="checkbox"/> Fabric/ Material	Masacril® 100% Solution Dyed Acrylic Masacril® 100% Acrílico Tintado en Masa	
<input type="checkbox"/> Tensile Strength Resistencia de tracción	Warp Urdimbre	31 h/cm (Nm 34/2)
	Weft Trama	15 h/cm (Nm 34/2)
Yarns/ Hilos	Warp Urdimbre	140 daN/5 cm
	Weft Trama	95 daN/5 cm
Weight / Peso	310 gr/m ²	
Water Repellency/ Columna de agua	360 mm	
Finish/ Acabado	Sauleda Fabric Protector	
Length of rolls/ Longitud de piezas	50 m	
Width/ Ancho	153 cm 60" 200 cm 78"	

Sea Star Special

<input type="checkbox"/> Fabric/ Material	Masacril® 100% Solution Dyed Acrylic Masacril® 100% Acrílico Tintado en Masa	
<input type="checkbox"/> Tensile Strength Resistencia de tracción	Warp Urdimbre	31 h/cm (Nm 34/2)
	Weft Trama	15 h/cm (Nm 34/2)
Yarns/ Hilos	Warp Urdimbre	160 daN/5 cm
	Weft Trama	95 daN/5 cm
Weight / Peso	330 gr/m ²	
Water Repellency/ Columna de agua	1.000 mm	
Finish/ Acabado	Sauleda Fabric Protector	
Length of rolls/ Longitud de piezas	50 m	
Width/ Ancho	153 cm 60" 200 cm 78"	

Important notice

When crafting the fabric, ensure that the resin-coated side is on the bottom side.

Importante

Al confeccionar el tejido, la cara resinada debe quedar en la parte inferior.



100% SOLUTION
DYED ACRYLIC/
100% ACRÍLICO
TINTADO EN MASA



WIDTH / ANCHO
153 cm / 60"
200 cm / 78"





EL CAMINO DEL MAR

Sea Star opens the new path in the sea. In the picture, from top to bottom: 1497 Ocean, 2433 Acquamarina and 2072 Regata.

Sea Star abre el nuevo camino del mar. En la fotografía, de arriba a abajo: 1497 Ocean, 2433 Acquamarina y 2072 Regata.



Optik

₪ 3589 153
3588 153



Blanco

₪ 2405 153 / 200
2439 153 / 200



Vainilla

₪ 8668 153
8666 153



Shell



₪ 1615 153
1614 153



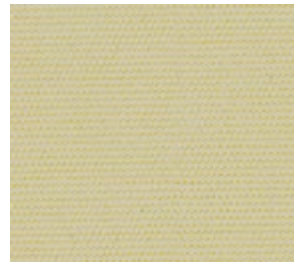
Seda

₪ 2453 153
2267 153



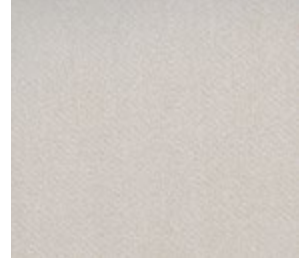
Integral

₪ 2443 153
2428 153



Avena

₪ 2451 153
2429 153



Marfil

₪ 2411 153 / 200
2163 153 / 200



Beige

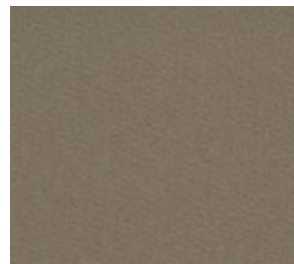
₪ 2403 153 / 200
2055 153 / 200



Toast



₪ 1495 153
1494 153



Vison

₪ 2452 153
2266 153



Tweed Avena

₪ 2719 153
2717 153



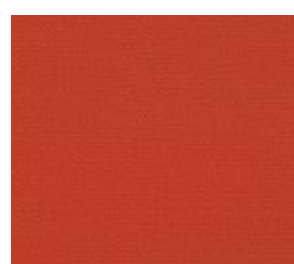
Amarillo

₪ 8634 153
8667 153



Naranja

₪ 8250 153
2138 153



Rojo

₪ 2419 153
2345 153



Rioja

₪ 2729 153
2634 153



Apricot

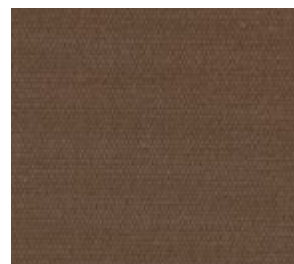


₪ 1491 153
1490 153



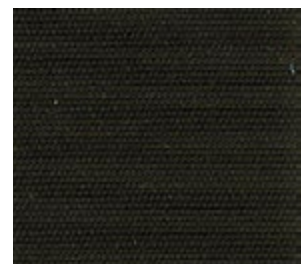
Teja

₪ 8733 153
2441 153



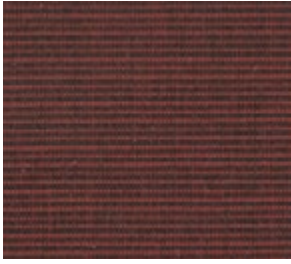
Marron

₪ 2415 153
2625 153



Cafe

₪ 2442 153
2434 153



Tweed Rojo

2718 153 / 200
2490 153



Granate

2407 153 / 200
2115 153 / 200



Brasserie

2406 153
2473 153



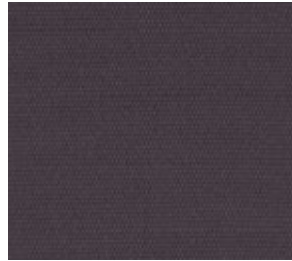
Pink

2469 153
2064 153



Lila

2467 153
2058 153



Purpura

2752 153
2751 153



Acquamarina

2460 153
2433 153



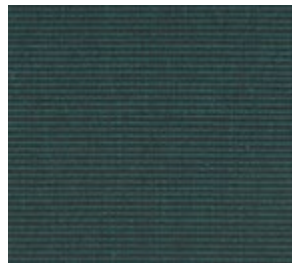
Jade

2416 153
2715 153



Verde

2742 153
2748 153



Tweed Verde

2710 153
2711 153



Botella

2488 153 / 200
2531 153 / 200



Racing

2410 153
2098 153



Glacier 

1611 153
1610 153



Denim 

1609 153
1608 153



Brisa

2418 153
2712 153



Ocean 

1498 153
1497 153



Indigo

2746 153
2745 153



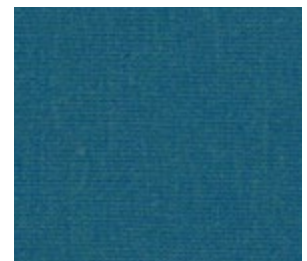
Regata

2470 153
2072 153



Azul Real

2423 153 / 200
2435 153 / 200



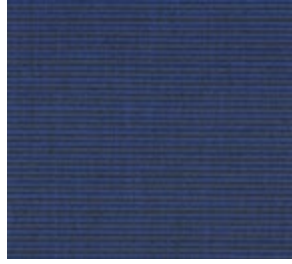
Atlantis 

1607 153
1606 153



Azul

2401 153 / 200
2431 153 / 200



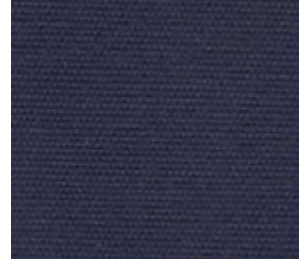
Tweed Azul

2660 153
2720 153



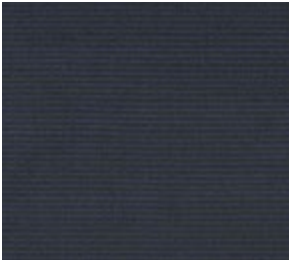
Marino

2413 153 / 200
2437 153 / 200



Commodore

3554 153
3553 153



Tweed Midnightblue

2743 153
2744 153



Armada

2448 153
2059 153



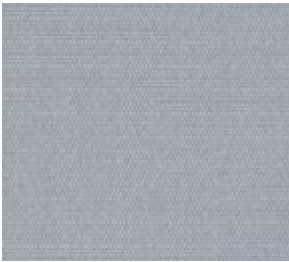
Admiral

2449 153 / 200
2450 153 / 200



Silver

2409 153 / 200
2540 153 / 200



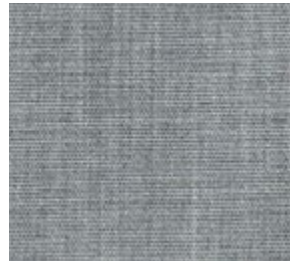
Perla

2417 153
2703 153



Gris

2421 153 / 200
2895 153 / 200



Piedra

3599 153
3598 153



Quartz

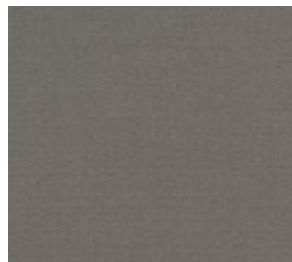


1613 153
1612 153



Tweed Gris Claro

2471 153
2716 153



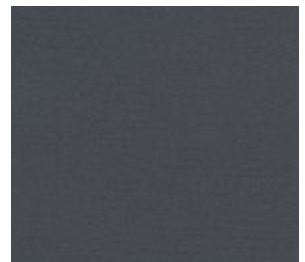
Mineral

2750 153
2749 153



Grafito

2466 153
2057 153



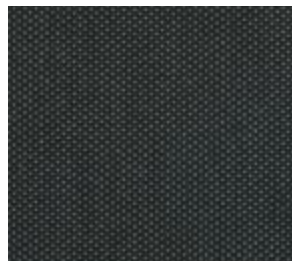
Antracita

2461 153
8487 153



Tweed Negro

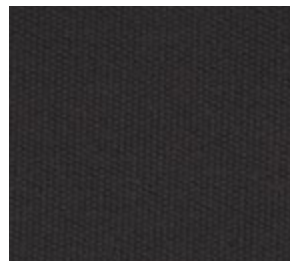
2463 153
2227 153



Coal



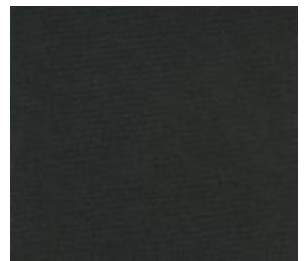
8860 153
1077 153



Carbon



1138 153
1137 153



Negro

2881 153 / 200
2880 153 / 200

SEA STAR'S CHART/ LA TABLA DE SEA STAR

Codes, widths and finishes/ Códigos, anchos y acabados

Width/ Ancho	153		200		☀️	(agon)	🌀
	N	S	N	S			
ACQUAMARINA	2433	2460			80		
ADMIRAL NAVY	2450	2449	8629	8721	80		
AMARILLO	8667	8634			80		
ANTRACITA	8487	2461			80	3731	1638
APRICOT	1490	1491			60		1632
ATLANTIS	1606	1607			80		
AVENA	2429	2451			40	3707	
AZUL	2431	2401	8748	8727	80	3722	
AZUL REAL	2435	2423	8635	8722	80		
BEIGE	2055	2403	8639	8765	80		
BLANCO	2439	2405	2067	8758	40	3701	1626
BOTELLA	2531	2488	8630	8258	80		1634
BRASSERIE	2473	2406			80		
BRISA	2712	2418			80		
CAFE	2434	2442			80		
CARBON	1137	1138			80		
COAL	1077	8860			80		
COMMODORE	3553	3554			80		
DENIM	1608	1609			80		
GLACIER	1610	1611			80	1368	1631
GRAFITO	2057	2466			80	3823	
GRANATE	2115	2407	8654	8723	80	3711	1630
GRIS	2895	2421	8655	8724	80	1231	
INDIGO	2745	2746			80		
INTEGRAL	2428	2443			80	3705	
JADE	2715	2416			80		
LILA	2058	2467			80		
MARFIL	2163	2411	8699	8759	40	3704	1627
MARINO	2437	2413	8636	8725	80	3723	1636
MARRON	2625	2415			80		
MINERAL	2749	2750			80	3729	
NARANJA	2138	8250			80		
NEGRO	2880	2881	8656	8726	80	3732	1639
OCEAN	1497	1498			80	1367	1635
OPTIK	3588	3589			60	3934	
PERLA	2703	2417			40	3735	
PIEDRA	3598	3599			80	3825	
PINK	2064	2469			80		
PURPURA	2751	2752			80		
QUARTZ	1612	1613			40	1369	1640
RACING	2098	2410			80		
REGATA	2072	2470			80		
RIOJA	2634	2729			80		
ROJO	2345	2419			80	3717	
SEDA	2267	2453			60		
SHELL	1614	1615			40		1628
SILVER	2540	2409	8260	8261	40	3728	
TEJA	2441	8733			80		
TOAST	1494	1495			60		
TWEED AVENA	2717	2719			80		
TWEED GRIS CL	2716	2471			80		
TWEED NEGRO	2227	2463			80		
TWEED ROJO	2490	2718			80		
TWEED VERDE	2711	2710			80		
VAINILLA	8666	8668			40		
VERDE	2748	2742			80		
VISON	2266	2452			80		

Sauleda



100% SOLUTION DYED ACRYLIC/
100% ACRÍLICO TINTADO EN MASA



Dimensional Stability
Estabilidad Dimensional



Quick Drying
Rápido Secado



Breathable
Transpirante



Water Repellent
Repelente al agua



Antibacterial
Antibacteriano



Climatic
Climático



Maximum Resistance
Máxima Resistencia



Anti Stain
Anti Manchas



Anti UVI
Anti UVI



Reversible
Doble Cara



Respects the Environment
Producción Respetuosa



Easy to Maintain
Fácil Mantenimiento

MAINTENANCE

- Eliminate the dirt by gently brushing or vacuuming the fabric.
- Occasionally use a water and soft soap solution to clean the fabric (max. 30°C).
- Apply to the fabric and then rinse with running water.
- Let the fabric dry completely.
- Do not use solvents or abrasive detergents.

BARRIER EFFECT

All our acrylic fabrics have been impregnated with Sauleda Fabric Protector. This creates a barrier effect and reinforces the water-repellent properties of the fabric. Furthermore, it delays the adherence of dirt to the fabric.

It is important to know that agents such as acid rain or bird excrements, and washing the fabric with abrasive products may damage the Sauleda Fabric Protector coating.

The 5 year warranty covers abnormal deterioration of the fabric fiber and colour and takes effect from the date of installation, provided there is normal exposure to the sun and atmospheric agents in general. Please consult the warranty terms on www.sauleda.com

MANTENIMIENTO

- Eliminar la suciedad mediante cepillado o aspirado suave de la lona.
- Esporádicamente utilizar una solución de agua y jabón neutro (max 30°C).
- Aplicar sobre la lona y posteriormente aclarar con abundante agua.
- Dejar secar totalmente la lona.
- No utilizar disolventes ni detergentes abrasivos.

EFFECTO BARRERA

El recubrimiento con Sauleda Fabric Protector de todos nuestros tejidos acrílicos, crea un efecto barrera reforzando la repelencia al agua y retardando la adherencia de la suciedad.

Importante: agentes como la lluvia ácida o los excrementos de los pájaros, así como un lavado abrasivo de la lona, pueden dañar el recubrimiento de Sauleda Fabric Protector.

La garantía de 5 años cubre un deterioro anormal de la fibra y el color de la lona y empieza a contar desde la fecha de su instalación, siempre que exista una exposición normal al sol y a los agentes atmosféricos en general. Consulte los términos de la garantía en www.sauleda.com



Catalogue



Store

Free download available:
Descarga gratis disponible:





Sauleda

since 1897

Travessera de les Corts, 102 08028 Barcelona (Spain)

+34 933 397 150
sauleda@sauleda.com



@sauledatextiles

www.sauleda.com