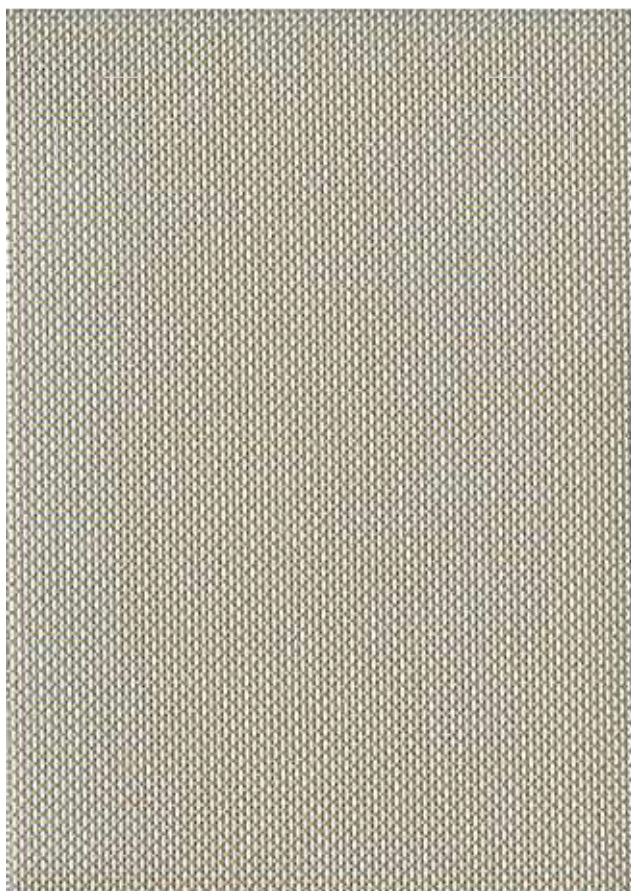




 **Sauleda** Textile

Relax

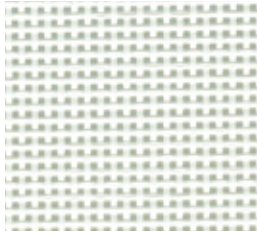


Características técnicas • Technical characteristics

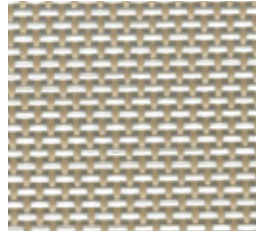
Composición • Composition	73 % PVC + 27 % PES	
Peso • Weight	520 gr/m ² +5 %	
Ancho • Width	210 cm	
Espesor • Thickness	0,88 mm +5 %	
Apertura • Aperture	22,5	
Solidez a la luz (escala de azules)	8/8 • 7/8 white	
Solidez a la luz (escala de grises)	5/5 • 4/5 white	
Fuerza máxima	Urdimbre • Warp	241 daN/5cm
	Trama • Weft	226 daN/5cm
Elongación a la fuerza máxima	Urdimbre • Warp	20,3 %
	Trama • Weft	19,9 %
Elongación bajo carga de 20 daN	Urdimbre • Warp	3,2 %
	Trama • Weft	3,4 %
Certificago Ignífugo • Fire retardant	M1	
Longitud de las piezas • Roll length	50 ml	

APLICACIONES • APPLICATIONS

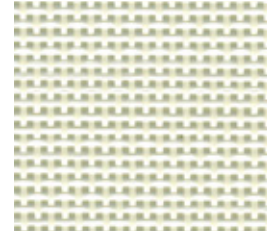
Mobiliario • Furniture



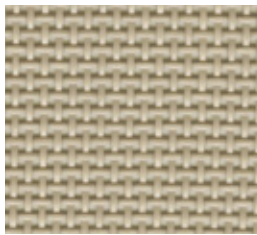
RELAX BLANCO
7855



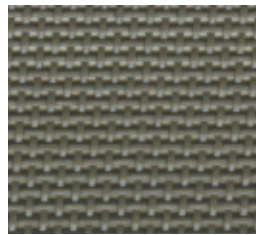
RELAX MARFIL
7856



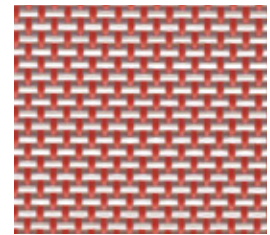
RELAX HUESO
7857



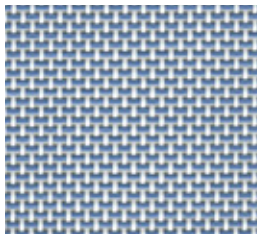
RELAX VISON
7851



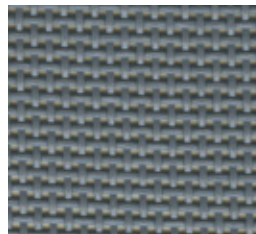
RELAX MOKA
7852



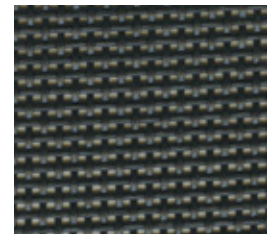
RELAX CARMIN
7858



RELAX ACERO
7859



RELAX GRIS
7853



RELAX NEGRO
7854



SAULEDA, S.A.
Travessera de les Corts, 102
08028 Barcelona (Spain)
Tel. +34 933 397 150
Fax +34 934 111 290
sauleda@sauleda.com
www.sauleda.com